

## iMedia Remote Button Configuration Guide

This guide will walk you through the configuration of the iMedia remote's custom modes, allowing you to set up customized actions for B1, B2, B3, B4 and B5.

### 1. Power up into SPP mode

Press and hold **B1** and **B4**, then hold **B5** to power the device into SPP mode

¶ The LEDs should alternate between blinking **red** and **yellow**.

### 2. Pair to your PC

Discover and pair the iMedia remote using your Bluetooth client. The device should display as iMedia\_xxxx-ABCD (xxxx represents the firmware version of the device; ABCD represents the last 2 bytes of the Bluetooth MAC address. If asked if passcode is correct, say 'Yes.'

¶ The iMedia remote should connect in SPP mode.

NOTE: If using PC/Mac that supports Bluetooth 2.1 or later, no pairing code is required. If using a PC/Mac using Bluetooth 2.0 and earlier: pairing code is 1234.

### 3. Connect to COM port

Locate which COM port the iMedia remote is using through Device Manager, then connect to that port using JavaTerm – You may see two COM ports listed for the device; be sure to select the one with the RNI-SPP profile.

¶ The **red** LED should stop blinking and **yellow** LED should be solid.

### 4. Enter command mode

Type '\$\$\$' to open CMD.

¶ The **yellow** LED will blink fast

Type '**h**' to see a list of commands. Type '**b**' to see currently set codes for the mode you are in.

### 5. Set iMedia remote's mode

Set the mode using '**SB,0,<mode=1,2,3,4>**'

- Mode 1 is Music Mode (changing this mode is not recommended)
- Mode 2 is Presenter Mode (changing this mode is not recommended)
- Mode 3 is a custom mode
- Mode 4 is a custom mode

### 6. Program buttons

To program a button, use '**SB,<button number>,<command>**'. The list of HID commands can be found in Figure 2, at the bottom of this document. Ex: SB,4,002C programs button 4 to send a space.

You can send up to six keys with a single press by separating each successive key with a comma.  
 Example: 'SB,3,0004,0005,0006' programs button 3 to send 'abc' (code 0004 = 'a', code 0005 = 'b', etc.).


There are modifier codes to add commands like SHIFT or ALT

- 0104 – CONTROL + 'a'
- 0204 – SHIFT + 'a'
- 0404 – ALT + 'a'
- 0804 – GUI + 'a'

The modifier is a BIT mask so you can have multiple bits set. Ex: 0704 would be CONTROL+SHIFT+ALT + 'a'.

## 7. Save configurations

Save the settings to the iMedia remote. This is done through JavaTerm, using the '**R,1**' command.

 You should see 'Reboot!'

## 8. Boot into desired mode

Configuration of the remote is now complete, and you may boot the iMedia remote into the desired mode. To select the mode that you are booting into, hold **B5 + corresponding button for the desired mode**. Ex: To boot into mode 4, press and hold B4 and B5.

 You should see the **red** LED blink four times.

A long key press of **B4** will toggle between modes.

## Figures:

Figure 1. HID codes for actions

Command	HID Code	Command	HID Code
AC home	8001	Play/Pause	8080
AC read email	8002	Next Track	8100
AC search	8004	Prev. Track	8200
Apple keyboard toggle	8008	Stop	8400
Volume Up	8010	Eject	8800
Volume Down	8020	Fast Forward	9000
Mute	8040	Rewind	A000

**Figure 2. ASCII to HID Report (to Host) Scan Codes**

ASCII	Code	ASCII	Code	ASCII	Code	ASCII	Code
System Power	81	m M	10	6 ^	23	. >	37
System Sleep	82	n N	11	7 &	24	/ ?	38
System Wake	83	o O	12	8 *	25	Caps Lock	39
No Event	00	p P	13	9 (	26	F1	3A
Overrun Error	01	q Q	14	o )	27	F2	3B
POST Fail	02	r R	15	Return	28	F3	3C
ErrorUndefined	03	s S	16	Escape	29	F4	3D
a A	04	t T	17	Backspace	2A	F5	3E
b B	05	u U	18	Tab	2B	F6	3F
c C	06	v V	19	Space	2C	F7	40
d D	07	w W	1A	- _	2D	F8	41
e E	08	x X	1B	= +	2E	F9	42
f F	09	y Y	1C	[ {	2F	F10	43
g G	0A	z Z	1D	] }	30	F11	44
h H	0B	1 !	1E	\	31	F12	45
i I	0C	2 @	1F	Europe 1	32	Print Screen	46
j J	0D	3 #	20	; :	33	Scroll Lock	47
k K	0E	4 \$	21	` "	34	Break (Ctrl-Pause)	48
l L	0F	5 %	22	, <	36	Pause	48

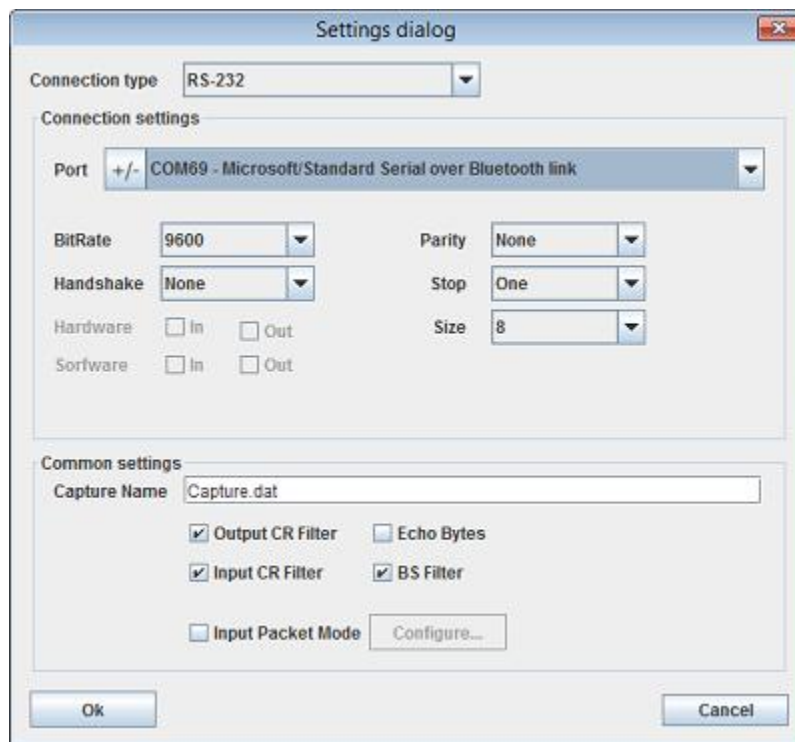
## Sample Setup – ‘Hello!’

This is a sample configuration to make Mode 3 display the text ‘Hello!’ when pressing button B1.

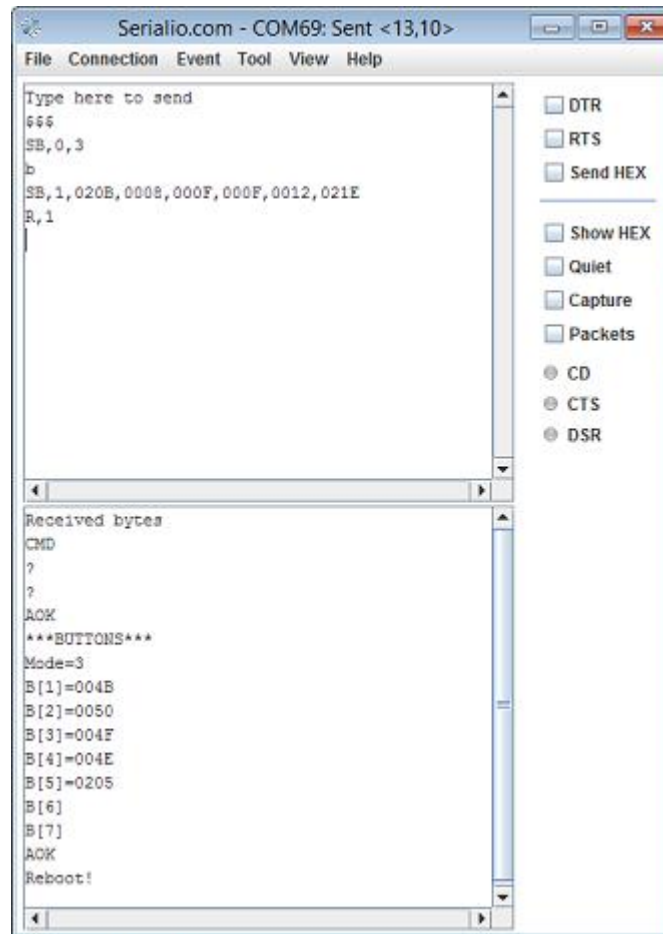
1. Press and hold **B1**, **B3**, and **B5** to boot the iMedia remote into SPP mode.
2. Pair the iMedia remote through Bluetooth.
3. Locate the correct COM port (In this case, COM 69)

Port	Direction	Name
COM69	Outgoing	iMedia_v101-C4C6 'RNI-SPP'
COM70	Incoming	iMedia_v101-C4C6

4. Open JavaTerm or other terminal application, and connect to your COM port.



5. Enter **\$\$\$ > SB,0,3 > SB,1,020B,0008,000F,000F,0012,021E > R,1**  
 ¶ You should see CMD > AOK > AOK > Reboot! In the bottom portion of JavaTerm.



Note: The 'b' command was to verify the mode currently being programmed.

The iMedia remote will power off after the Reboot command.

6. Disconnect the iMedia remote from your computer's Bluetooth.
7. Hold **B3** and **B5** on the iMedia remote to power the device on in mode 3.
8. Pair the device with your phone, tablet, or computer.
9. Press **B1** on the iMedia remote.

🔊 You should see the keys you programmed to **B1** – in this case the text 'Hello!'

