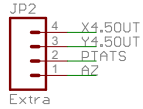
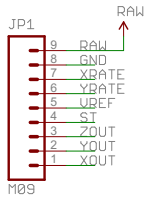
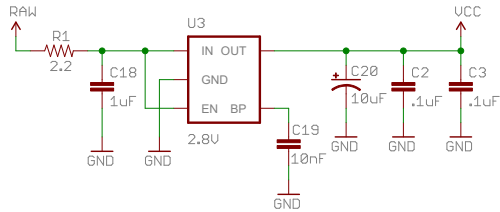
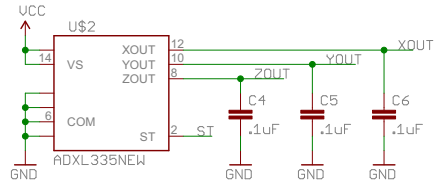


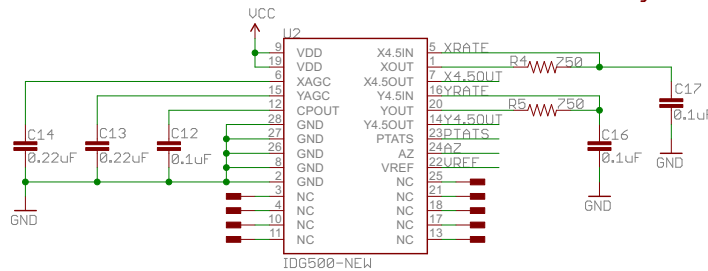
Power



Accelerometer



Gyro



Changes to v27 (10-4-11)
 -moved 4 pin header on grid (up and to the right 0.05 inches)

Changes to v28 (1-19-12)
 -added OSHW logo
 -BOM CHANGE - vreg should now be a 2.8V vreg
 -changed the RAW power input to hit the vreg first.
 -regulated power then routed to both sensors.
 -Updated package for ADXL355 (LFCSP-16-NEW)
 -Updated Symbol and Package for IDG500 (SPARKFUN_IDG500-2)
 -now includes NC pins
 -Changed "3.3U" bplace on Raw input to "RAW"



SFE

TITLE: 5DOF-v28

Document Number:

REV:

Date: 2/2/2012 10:28:58 AM

Sheet: 1/1

