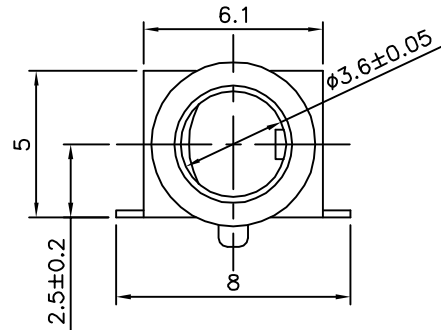
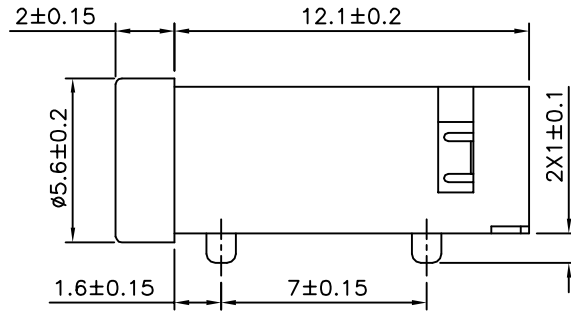


△ SPECIFICATION

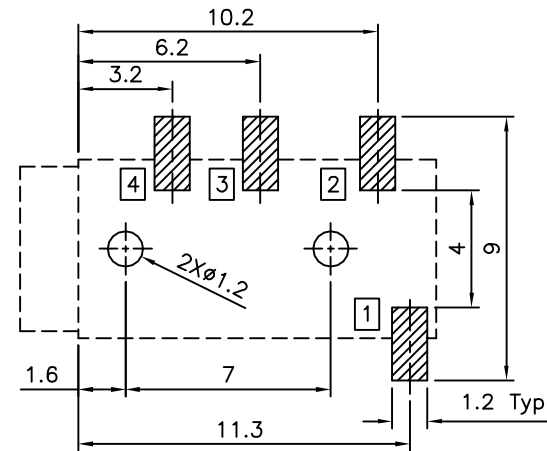
Rating:DC 30V 0.5A
 Contact Resistance:50 Milliohms Max.
 After Test:100 Milliohms Max.
 Insulation Resistance:100 Megaohms Min. (500V DC)
 After Test:50 Megaohms Min.
 Withstand Voltage:500V AC
 Insertion And Extraction Force:3N~30N
 Life Test:5000 Cycles Min.
 Operation Temperature Range:-20°C~+70°C
 Preservative Temperature Range:-40°C~+85°C
 RoHS Compliant



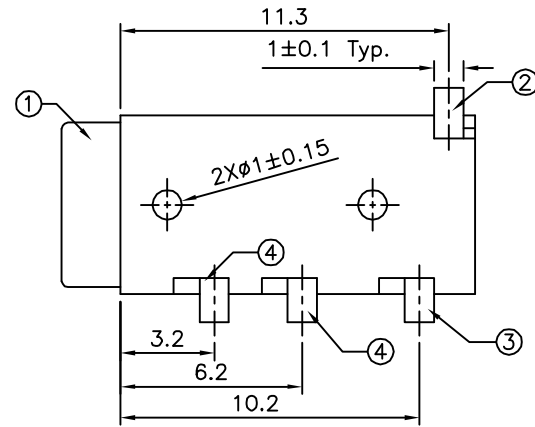
△△



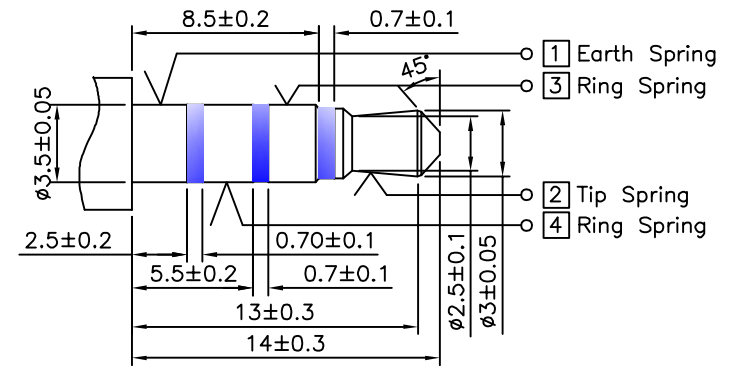
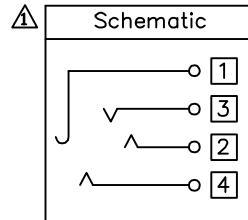
△△



△ Recommended P.C.B. Layout(Top View)
 (PCB Board Tolerance±0.05)



△△



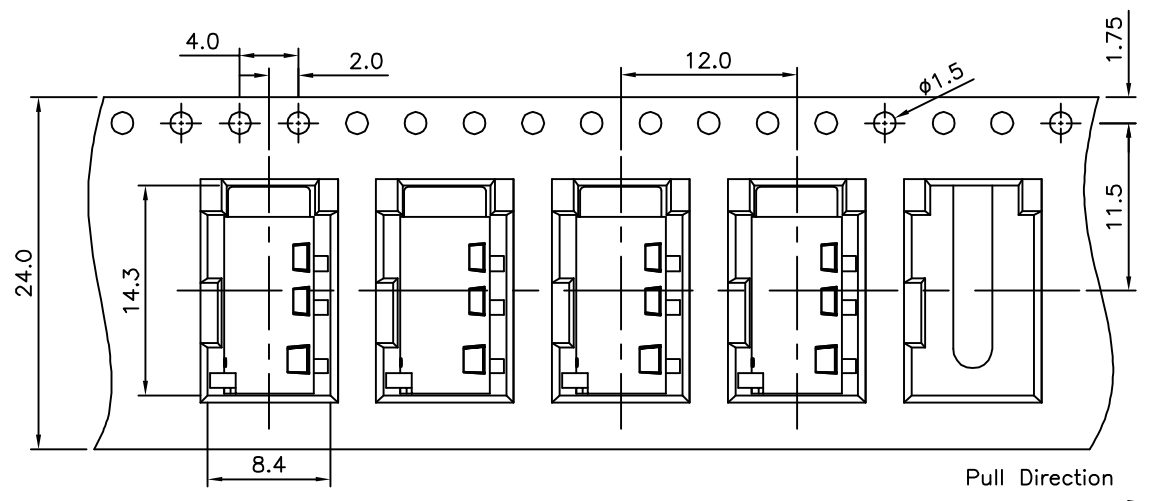
△△ Matching Plug

No.	Description	Q'ty	Material	Remark
④	Ring Spring ③&④	2	Phosphor Bronze	Silver Plated
③	Tip Spring ②	1	Phosphor Bronze	Silver Plated
②	Earth Spring ①	1	Stainless Steel	Silver Plated
①	Housing	1	PA9T	Black

DRAWING No.		APPROVED BY		UNLESS OTHERWISE SPECIFIED TOLERANCES ARE △ X. ±0.3 △ .X ±0.3 △ .XX ±0.3 △ ANG. ±2°
20153		MEI		
		CHECKED BY		
		HZF		
		DRAWING BY		UNIT mm
		GAO		
SCALE	NONE	REV.	A3	

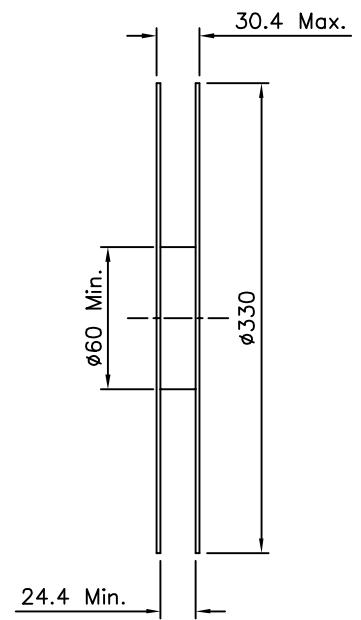
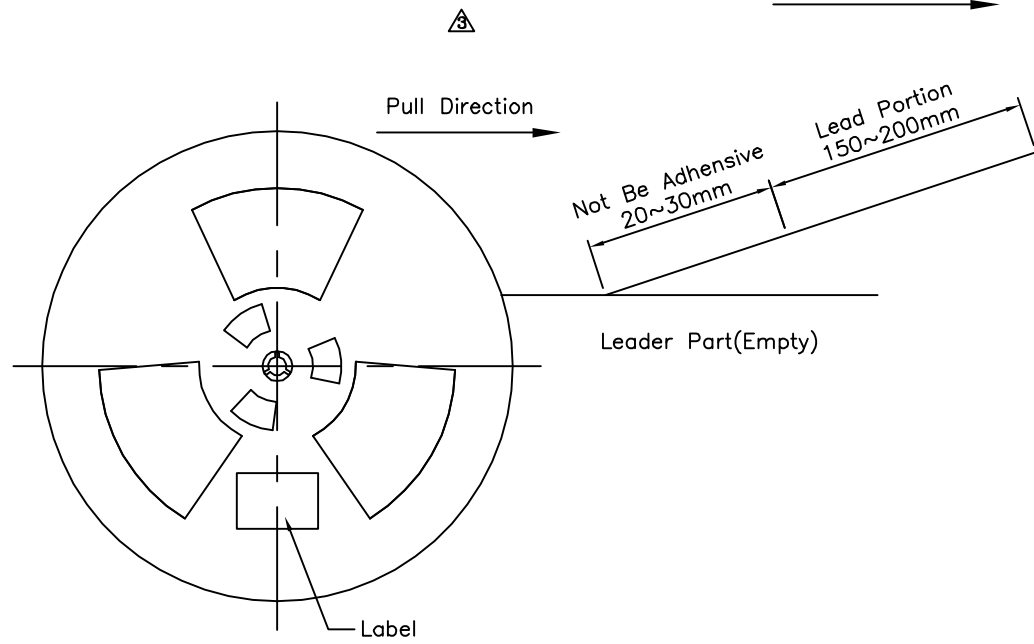
NO.	REV.	REVISIONS	CHK	DATE
△A3		Modify Data	HZF	03/30/2013
△A2		Modify Data	HZF	07/18/2011
△A1		Modify Data	HZF	08/31/2010
△A0		NEW RELEASE	HZF	01/14/2007

4UCON 元化興業股份有限公司
 4UCON TECHNOLOGY INC.



SPECIFICATION

1. The Connector Can Not Be Loaded On The Position Of Length 240~360mm In The Reel Tape And Lead Tape. The Cover Tape With 20~30mm Length Shall Not Be Adhesive On The Lead Tape And The Cover Tape Is Lead Portion Shall Have 150~200mm Length
 2. Tape Shall Turn On Right Direction
 3. The Direction Of Connector Is Fixed Regarding The Position Of Terminal, Please Refer Outline Drawing
 4. After Winding, Using The Adhesive Tape (30~50mm) To Stick The Leader Of Cover Tape On The Side Of Reel
 5. One Reel Can Be Loaded 600 PCS Connector
 6. Condition Of 300mm Per Minute, The Extraction Strength Of Cover Tape Shall Reach 20~150 gf
- RoHS Compliant



4UCON 元化興業股份有限公司
4UCON TECHNOLOGY INC.

DRAWING No.		APPROVED BY		UNLESS OTHERWISE SPECIFIED TOLERANCES ARE $\triangle X \pm 0.38$ $\triangle XX \pm 0.25$ ANG.					
20153		MEI			$\triangle A3$	Modify Data	HZF	03/30/2013	
		CHECKED BY			$\triangle A2$	Modify Data	HZF	07/18/2011	
		DRAWING BY		$\triangle A1$	Modify Data	HZF	08/31/2010		
		GAO		$\triangle A0$	NEW RELEASE	HZF	01/14/2007		
SCALE	NONE	REV.	A3	UNIT	mm	NO. REV.	REVISIONS	CHK	DATE