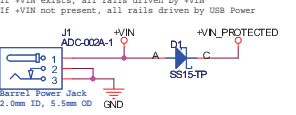
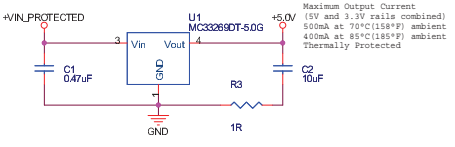


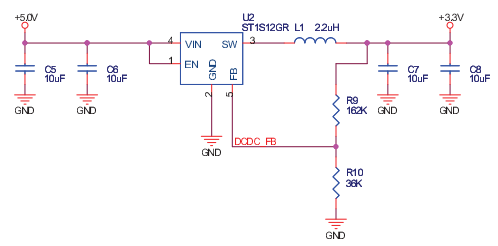
**Power Connector**  
**+7.5V to +9V DC Input**  
 If +VIN exists, all rails driven by +VIN  
 If +VIN not present, all rails driven by USB Power



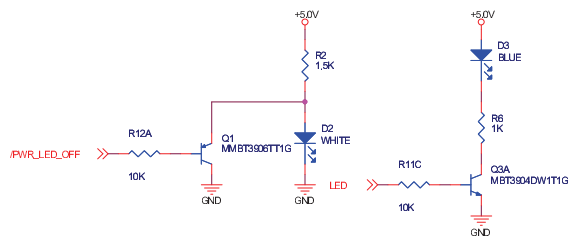
**5V LDO Converter**



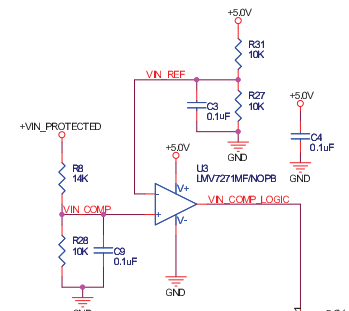
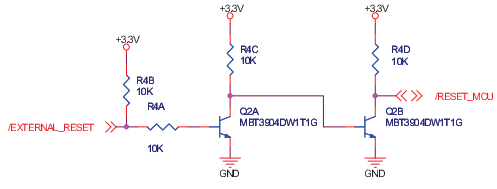
**5V to 3.3V DC/DC Buck Regulator**



**PWR**



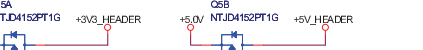
**Reset Circuit**



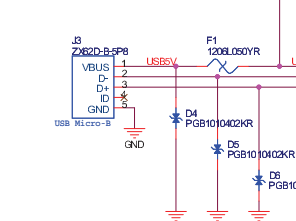
**Push Button**



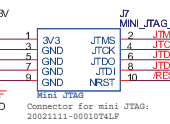
**Header Power Switches**



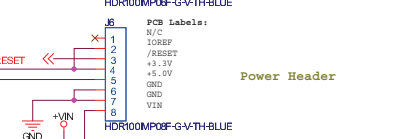
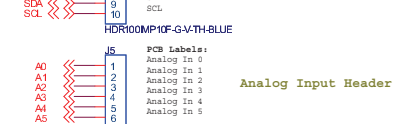
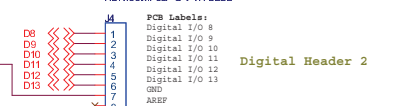
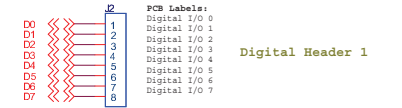
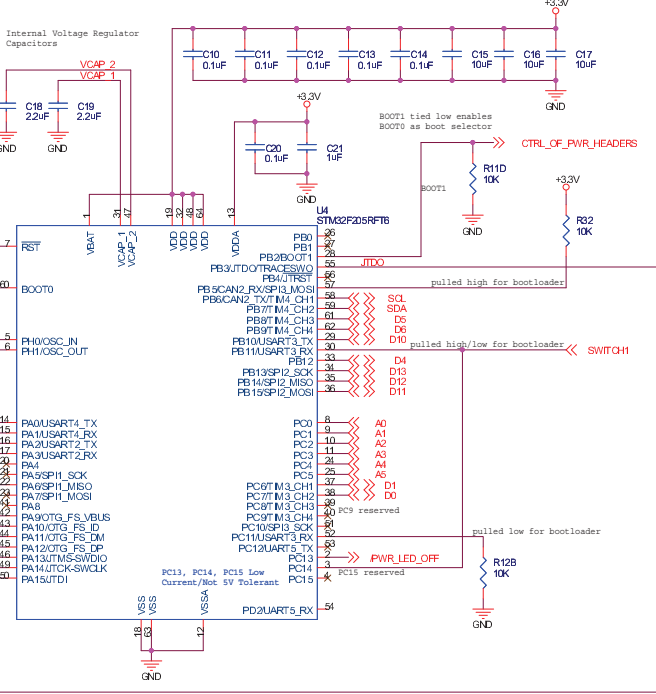
**USB Micro-B Connector**



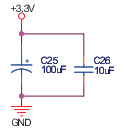
**Mini JTAG Connector**



**Microcontroller**



**Bulk Smoothing Capacitors**



Title		Nalduino 2	
Size	C	Document Number	CW0035
Date:	Tuesday, October 16, 2012	Sheet	1 of 1

